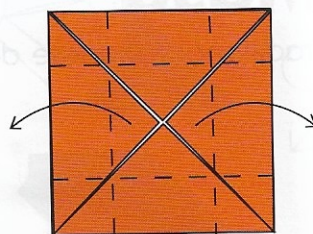
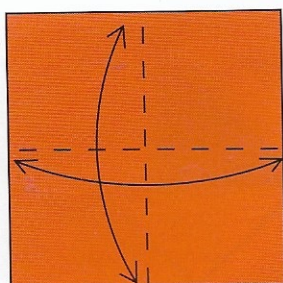


Masu

Traditional Japanese design

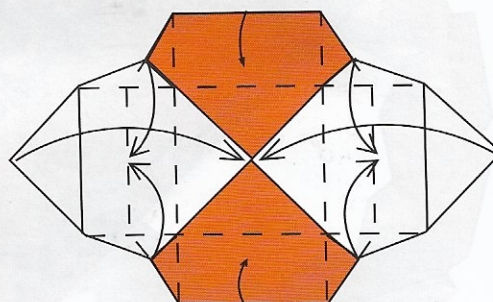
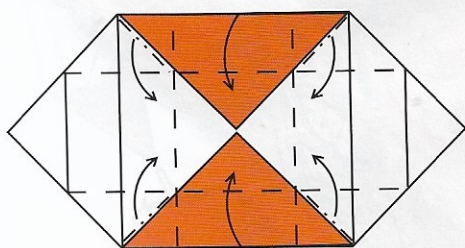




1. Begin with the desired color or pattern side up. Valley-fold in half, edge to edge, both ways and unfold. Turn over and rotate 45 degrees.

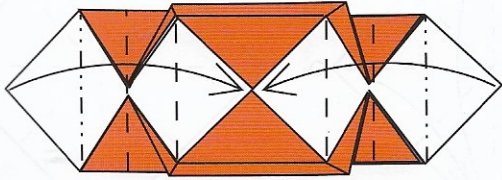
2. Fold all four corners to meet at the center.

3. Fold and unfold all four edges to the center. Pull out the left and the right corners.

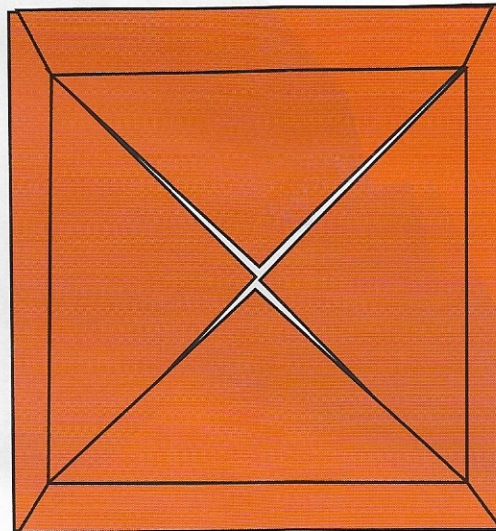


4. Using the mountain and valley creases, bring up the bottom and top edges while folding in the corners.

5. Continue to shape the box. Feel which way the creases move most easily.



6. Fold in the left and right corners, over the walls and to the bottom of the box.



7. The finished Masu. The paper Masu is a Japanese measuring box.